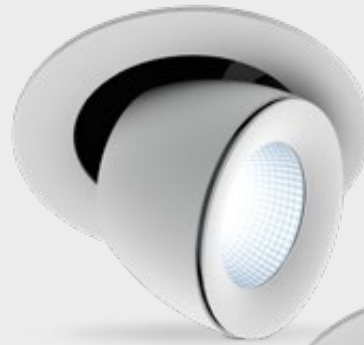
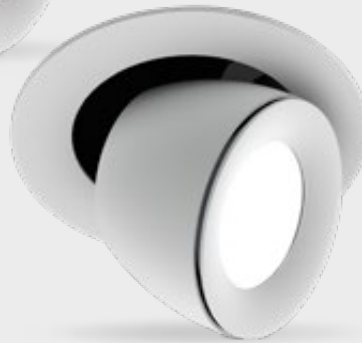


FEATURES

- 4 different sharp beam angles
- Wide variety of TM30 optimized LEDs
- ENEC approved drivers
- IEEE P1789 Flickerfree driver to 1%



LV 18° / 37° / 60°



LV 80° (on request)

COLOURS

Available colours:



Matt white RAL 9016 (XX=MW)
Matt black RAL 9005 (XX=BL)

SPRINGS

Standard with CS springs (concrete/gyproc).
Also available with GS springs (gyproc).

Linea DS-A 195 LV(-HE)

Adjustable

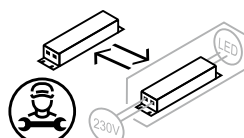
SPECIFICATIONS

Beam angle (FWHM)	18° / 37° / 60° / 80°
Fixture material	Die cast aluminium / Glass
Environment	Indoor
IP rate	IP20
IK rate	IK09
Operating temperature (Ta)	-20°C / +45°C ¹
Safety marks	EN60598 / EN62031 / EN62471
EMC compliance	EN55015
Colour consistency (SDCM)	MacAdam step 3
Warranty	7 Years
Energy class	These products contain a light source of energy efficiency class: CRI95 - D (3000K/4000K) & CRI82 - E (3000K) / D (4000K)

This luminaire contains built-in LED lamps. The lamps cannot be changed in the luminaire. EU 874/2012

¹ In applications with a flat roof (fi. car showrooms) the temperatures may exceed 45°C. Please ask our sales office for a special driver.

Ask our sales department about the possibilities for:
- Tunable white 2700-6500K.



IP20

LINEA DS-A 195 VARIATIONS

Linea DS-A LV-HE	CRI95	3000/4000K	3300/3500Lm	incl. power supply	page 3
Linea DS-A LV-HE	CRI95	3000/4000K	5000/5300Lm	incl. power supply	page 4
Linea DS-A LV-HE	CRI82	3000/4000K	3575/3650Lm	incl. power supply	page 5
Linea DS-A LV-HE	CRI82	3000/4000K	5550/5800Lm	incl. power supply	page 6

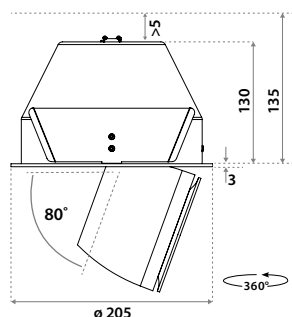
CRI95 CHOOSE YOUR LV LUMEN OUTPUT

	mA	W	Lumen Output		Lumen / Watt		UGR				Driver types				
			3000K	4000K	3000K	4000K	3000K				No dim	Triac	1-10V&Push	Dali	Casambi
							18°	37°	60°	80°					
Special request	250	9,4	1250	1275	133	136	14.9	14.4	17.4	25.6	CC21W150-500	on request	125400	142014	142047
Special request	350	13,3	1725	1750	130	132	16.0	15.5	18.5	26.7	145192	EC25CA-EIZHP	125400	142014	142047
Special request	500	19,4	2400	2500	124	129	17.2	16.7	19.7	27.8	145192	EC25CA-EIZHP	125400	142014	142047
Standard	700	28,0	3300	3500	118	125	18.3	17.8	20.8	28.9	145192	EC25CA-EIZHP	126421	142014	142047
Special request	800	32,5	3725	3950	115	122	18.7	18.2	21.2	29.4	145192	on request	151100	142014	142047
Special request	900	37,0	4150	4400	112	119	19.1	18.6	21.6	29.7	145192	on request	151100	142014	142047
Special request	1050	44,1	4575	4850	104	110	19.4	18.9	21.9	30.1	145192	on request	151100	142014	142047
Standard	1200	51,3	5000	5300	97	103	19.7	19.2	22.2	30.4	127690	x	ECO561A	ECO560A	x

CRI82 CHOOSE YOUR LV LUMEN OUTPUT

	mA	W	Lumen Output		Lumen / Watt		UGR				Driver types				
			3000K	4000K	3000K	4000K	3000K				No dim	Triac	1-10V&Push	Dali	Casambi
							18°	37°	60°						
Special request	250	9,2	1350	1400	147	152	15.2	14.7	17.7		CC21W150-500	on request	125400	142014	142047
Special request	350	13,1	1850	1900	141	145	16.3	15.8	18.8		145192	EC25CA-EIZHP	125400	142014	142047
Special request	500	19,4	2525	2600	130	134	17.4	16.8	19.9		145192	EC25CA-EIZHP	125400	142014	142047
Standard	700	27,9	3575	3650	128	131	18.6	18.1	21.1		145192	EC25CA-EIZHP	126421	142014	142047
Special request	800	32,4	3825	4050	118	125	18.8	18.3	21.3		145192	on request	151100	142014	142047
Special request	900	36,8	4300	4500	117	122	19.2	18.7	21.7		145192	on request	151100	142014	142047
Special request	1050	43,7	4900	5100	112	117	19.7	19.2	22.2		145192	on request	151100	142014	142047
Standard	1200	51,2	5550	5800	108	113	20.1	19.6	22.6		127690	x	ECO561A	ECO560A	x

DIMENSIONS



HOLE SIZE



Using CS springs: Ø 195 mm.
 Thickness ceiling 5-135 mm & recess depth 135 mm. For plasterboard ceilings or similar harder materials. Turn the ring on the front counterclockwise after installation.



Using GS springs: Ø 195 mm.
 Thickness ceiling 1-135 mm & recess depth 135 mm. For soft ceiling tiles we recommend using a wooden plate or a ceiling ring on the reverse side of the tile.

LINEA DS-A LV-HE
CRI95 3300/3500LM
ITEM SPECIFICATIONS (PART A)

Description	Item code		UGR	Type	mA	Vf
	CS	GS				
Linea DS-A LV-HE 3300 Lm 3000K CRI95 18° No dim	13R603XXCA02	13R603XXGA02	18.3	Incl. PSU	700	40,0
Linea DS-A LV-HE 3300 Lm 3000K CRI95 18° 1-10V & Push	13R603XXNA02	13R603XXUA02	18.3	Incl. PSU	700	40,0
Linea DS-A LV-HE 3300 Lm 3000K CRI95 18° Dali	13R603XXPA02	13R603XXVA02	18.3	Incl. PSU	700	40,0
Linea DS-A LV-HE 3300 Lm 3000K CRI95 37° No dim	13R603XXCB02	13R603XXGB02	17.8	Incl. PSU	700	40,0
Linea DS-A LV-HE 3300 Lm 3000K CRI95 37° 1-10V & Push	13R603XXNB02	13R603XXUB02	17.8	Incl. PSU	700	40,0
Linea DS-A LV-HE 3300 Lm 3000K CRI95 37° Dali	13R603XXPB02	13R603XXVB02	17.8	Incl. PSU	700	40,0
Linea DS-A LV-HE 3300 Lm 3000K CRI95 60° No dim	13R603XXCC02	13R603XXGC02	20.8	Incl. PSU	700	40,0
Linea DS-A LV-HE 3300 Lm 3000K CRI95 60° 1-10V & Push	13R603XXNC02	13R603XXUC02	20.8	Incl. PSU	700	40,0
Linea DS-A LV-HE 3300 Lm 3000K CRI95 60° Dali	13R603XXPC02	13R603XXVC02	20.8	Incl. PSU	700	40,0
Linea DS-A LV-HE 3300 Lm 3000K CRI95 80° No dim	13R603XXG602	13R603XXZM02	28.9	Incl. PSU	700	40,0
Linea DS-A LV-HE 3300 Lm 3000K CRI95 80° 1-10V & Push	13R603XXU602	13R603XXZR02	28.9	Incl. PSU	700	40,0
Linea DS-A LV-HE 3300 Lm 3000K CRI95 80° Dali	13R603XXT602	13R603XXZV02	28.9	Incl. PSU	700	40,0
Linea DS-A LV-HE 3500 Lm 4000K CRI95 18° No dim	13R603XXCD02	13R603XXGD02	18.5	Incl. PSU	700	40,0
Linea DS-A LV-HE 3500 Lm 4000K CRI95 18° 1-10V & Push	13R603XXND02	13R603XXUD02	18.5	Incl. PSU	700	40,0
Linea DS-A LV-HE 3500 Lm 4000K CRI95 18° Dali	13R603XXPD02	13R603XXVD02	18.5	Incl. PSU	700	40,0
Linea DS-A LV-HE 3500 Lm 4000K CRI95 37° No dim	13R603XXCE02	13R603XXGE02	18.0	Incl. PSU	700	40,0
Linea DS-A LV-HE 3500 Lm 4000K CRI95 37° 1-10V & Push	13R603XXNE02	13R603XXUE02	18.0	Incl. PSU	700	40,0
Linea DS-A LV-HE 3500 Lm 4000K CRI95 37° Dali	13R603XXPE02	13R603XXVE02	18.0	Incl. PSU	700	40,0
Linea DS-A LV-HE 3500 Lm 4000K CRI95 60° No dim	13R603XXCF02	13R603XXGF02	21.0	Incl. PSU	700	40,0
Linea DS-A LV-HE 3500 Lm 4000K CRI95 60° 1-10V & Push	13R603XXNF02	13R603XXUF02	21.0	Incl. PSU	700	40,0
Linea DS-A LV-HE 3500 Lm 4000K CRI95 60° Dali	13R603XXPF02	13R603XXVF02	21.0	Incl. PSU	700	40,0
Linea DS-A LV-HE 3500 Lm 4000K CRI95 80° No dim	13R603XXG802	13R603XXZP02	29.1	Incl. PSU	700	40,0
Linea DS-A LV-HE 3500 Lm 4000K CRI95 80° 1-10V & Push	13R603XXU802	13R603XXZT02	29.1	Incl. PSU	700	40,0
Linea DS-A LV-HE 3500 Lm 4000K CRI95 80° Dali	13R603XXT802	13R603XXZ802	29.1	Incl. PSU	700	40,0

ITEM SPECIFICATIONS (PART B)

Description	W	Lm	Lm/W	CRI (typ.)	Pf	Ripple	Inrush current	B-16A Fuse	Safety class	Energy class
Linea DS-A LV-HE 3300 Lm 3000K CRI95 No dim	28,0	3300	118	95	0.98	<5%	7A 13µS	50 pcs	II	D
Linea DS-A LV-HE 3300 Lm 3000K CRI95 1-10V & Push	28,0	3300	118	95	0.95	<3%	5A 50µS	50 pcs	II	D
Linea DS-A LV-HE 3300 Lm 3000K CRI95 Dali	28,0	3300	118	95	0.95	<3%	5A 50µS	50 pcs	II	D
Linea DS-A LV-HE 3500 Lm 4000K CRI95 No dim	28,0	3500	125	95	0.98	<5%	7A 13µS	50 pcs	II	D
Linea DS-A LV-HE 3500 Lm 4000K CRI95 1-10V & Push	28,0	3500	125	95	0.95	<3%	5A 50µS	50 pcs	II	D
Linea DS-A LV-HE 3500 Lm 4000K CRI95 Dali	28,0	3500	125	95	0.95	<3%	5A 50µS	50 pcs	II	D

ITEM SPECIFICATIONS (PART C)

Description	Weight	Dimensions single carton	Quantity per carton	Expected Lifetime			Reported Lifetime*		
				L70B10	L80B10	L90B10	L70B10	L80B10	L90B10
Linea DS-A LV-HE CRI95	2094 gr	210x210x140 mm	6 pcs	653.000 hrs	529.000 hrs	465.000 hrs	>105.000 hrs	>105.000 hrs	>105.000 hrs

All values are measured at 230V (+/- 7%). * Based on 19.000hrs of LM80 testing at 1200mA and a Tc85°C.

LINEA DS-A LV-HE

CRI95 5000/5300LM

ITEM SPECIFICATIONS (PART A)

Description	Item code		UGR	Type	mA	Vf
	CS	GS				
Linea DS-A LV-HE 5000 Lm 3000K CRI95 18° No dim	13R603XXCR02	13R603XXGR02	19.7	Incl. PSU	1200	42,7
Linea DS-A LV-HE 5000 Lm 3000K CRI95 18° 1-10V & Push	13R603XXNK02	13R603XXUK02	19.7	Incl. PSU	1200	42,7
Linea DS-A LV-HE 5000 Lm 3000K CRI95 18° Dali	13R603XXPK02	13R603XXVK02	19.7	Incl. PSU	1200	42,7
Linea DS-A LV-HE 5000 Lm 3000K CRI95 37° No dim	13R603XXCS02	13R603XXGS02	19.2	Incl. PSU	1200	42,7
Linea DS-A LV-HE 5000 Lm 3000K CRI95 37° 1-10V & Push	13R603XXNL02	13R603XXUL02	19.2	Incl. PSU	1200	42,7
Linea DS-A LV-HE 5000 Lm 3000K CRI95 37° Dali	13R603XXPL02	13R603XXVL02	19.2	Incl. PSU	1200	42,7
Linea DS-A LV-HE 5000 Lm 3000K CRI95 60° No dim	13R603XXCT02	13R603XXGT02	22.2	Incl. PSU	1200	42,7
Linea DS-A LV-HE 5000 Lm 3000K CRI95 60° 1-10V & Push	13R603XXNM02	13R603XXUM02	22.2	Incl. PSU	1200	42,7
Linea DS-A LV-HE 5000 Lm 3000K CRI95 60° Dali	13R603XXPM02	13R603XXVM02	22.2	Incl. PSU	1200	42,7
Linea DS-A LV-HE 5000 Lm 3000K CRI95 80° No dim	13R603XXG702	13R603XXZN02	30.4	Incl. PSU	1200	42,7
Linea DS-A LV-HE 5000 Lm 3000K CRI95 80° 1-10V & Push	13R603XXU702	13R603XXZS02	30.4	Incl. PSU	1200	42,7
Linea DS-A LV-HE 5000 Lm 3000K CRI95 80° Dali	13R603XXT702	13R603XXZW02	30.4	Incl. PSU	1200	42,7
Linea DS-A LV-HE 5300 Lm 4000K CRI95 18° No dim	13R603XXCU02	13R603XXGU02	19.9	Incl. PSU	1200	42,7
Linea DS-A LV-HE 5300 Lm 4000K CRI95 18° 1-10V & Push	13R603XXNN02	13R603XXUN02	19.9	Incl. PSU	1200	42,7
Linea DS-A LV-HE 5300 Lm 4000K CRI95 18° Dali	13R603XXPN02	13R603XXVN02	19.9	Incl. PSU	1200	42,7
Linea DS-A LV-HE 5300 Lm 4000K CRI95 37° No dim	13R603XXPP02	13R603XXGV02	19.4	Incl. PSU	1200	42,7
Linea DS-A LV-HE 5300 Lm 4000K CRI95 37° 1-10V & Push	13R603XXNP02	13R603XXUP02	19.4	Incl. PSU	1200	42,7
Linea DS-A LV-HE 5300 Lm 4000K CRI95 37° Dali	13R603XXPP02	13R603XXVP02	19.4	Incl. PSU	1200	42,7
Linea DS-A LV-HE 5300 Lm 4000K CRI95 60° No dim	13R603XXCW02	13R603XXGW02	22.4	Incl. PSU	1200	42,7
Linea DS-A LV-HE 5300 Lm 4000K CRI95 60° 1-10V & Push	13R603XXNQ02	13R603XXUQ02	22.4	Incl. PSU	1200	42,7
Linea DS-A LV-HE 5300 Lm 4000K CRI95 60° Dali	13R603XXPQ02	13R603XXVQ02	22.4	Incl. PSU	1200	42,7
Linea DS-A LV-HE 5300 Lm 4000K CRI95 80° No dim	13R603XXG902	13R603XXZQ02	30.6	Incl. PSU	1200	42,7
Linea DS-A LV-HE 5300 Lm 4000K CRI95 80° 1-10V & Push	13R603XXU902	13R603XXZU02	30.6	Incl. PSU	1200	42,7
Linea DS-A LV-HE 5300 Lm 4000K CRI95 80° Dali	13R603XXT902	13R603XXZY02	30.6	Incl. PSU	1200	42,7

ITEM SPECIFICATIONS (PART B)

Description	W	Lm	Lm/W	CRI (typ.)	Pf	Ripple	Inrush current	B-16A Fuse	Safety class	Energy class
Linea DS-A LV-HE 5000 Lm 3000K CRI95 No dim	51,3	5000	97	95	0.95	<3%	5A 50µs	50 pcs	II	D
Linea DS-A LV-HE 5000 Lm 3000K CRI95 1-10V & Push	51,3	5000	97	95	0.95	<3%	100mA²s	22 pcs	II	D
Linea DS-A LV-HE 5000 Lm 3000K CRI95 Dali	51,3	5000	97	95	0.95	<3%	100mA²s	22 pcs	II	D
Linea DS-A LV-HE 5300 Lm 4000K CRI95 No dim	51,3	5300	103	95	0.95	<3%	5A 50µs	50 pcs	II	D
Linea DS-A LV-HE 5300 Lm 4000K CRI95 1-10V & Push	51,3	5300	103	95	0.95	<3%	100mA²s	22 pcs	II	D
Linea DS-A LV-HE 5300 Lm 4000K CRI95 Dali	51,3	5300	103	95	0.95	<3%	100mA²s	22 pcs	II	D

ITEM SPECIFICATIONS (PART C)

Description	Weight	Dimensions single carton	Quantity per carton	Expected Lifetime			Reported Lifetime*		
				L70B10	L80B10	L90B10	L70B10	L80B10	L90B10
Linea DS-A LV-HE CRI95	2094 gr	210x210x140 mm	6 pcs	653.000 hrs	529.000 hrs	465.000 hrs	>105.000 hrs	>105.000 hrs	>105.000 hrs

All values are measured at 230V (+/- 7%). * Based on 19.000hrs of LM80 testing at 1200mA and a Tc85°C.

LINEA DS-A 195 LV-HE

CRI82 3575/3650LM

ITEM SPECIFICATIONS (PART A)

Description	Item code		UGR	Type	mA	Vf
	CS	GS				
Linea DS-A LV-HE 3575 Lm 3000K CRI82 18° No dim	13N603XXCA02	13N603XXGA02	18.6	Incl. PSU	700	37,5
Linea DS-A LV-HE 3575 Lm 3000K CRI82 18° 1-10V & Push	13N603XXNA02	13N603XXUA02	18.6	Incl. PSU	700	37,5
Linea DS-A LV-HE 3575 Lm 3000K CRI82 18° Dali	13N603XXPA02	13N603XXVA02	18.6	Incl. PSU	700	37,5
Linea DS-A LV-HE 3575 Lm 3000K CRI82 37° No dim	13N603XXCB02	13N603XXGB02	18.1	Incl. PSU	700	37,5
Linea DS-A LV-HE 3575 Lm 3000K CRI82 37° 1-10V & Push	13N603XXNB02	13N603XXUB02	18.1	Incl. PSU	700	37,5
Linea DS-A LV-HE 3575 Lm 3000K CRI82 37° Dali	13N603XXPB02	13N603XXVB02	18.1	Incl. PSU	700	37,5
Linea DS-A LV-HE 3575 Lm 3000K CRI82 60° No dim	13N603XXCC02	13N603XXGC02	21.1	Incl. PSU	700	37,5
Linea DS-A LV-HE 3575 Lm 3000K CRI82 60° 1-10V & Push	13N603XXNC02	13N603XXUC02	21.1	Incl. PSU	700	37,5
Linea DS-A LV-HE 3575 Lm 3000K CRI82 60° Dali	13N603XXPC02	13N603XXVC02	21.1	Incl. PSU	700	37,5
Linea DS-A LV-HE 3650 Lm 4000K CRI82 18° No dim	13N603XXCD02	13N603XXGD02	18.6	Incl. PSU	700	37,5
Linea DS-A LV-HE 3650 Lm 4000K CRI82 18° 1-10V & Push	13N603XXND02	13N603XXUD02	18.6	Incl. PSU	700	37,5
Linea DS-A LV-HE 3650 Lm 4000K CRI82 18° Dali	13N603XXPD02	13N603XXVD02	18.6	Incl. PSU	700	37,5
Linea DS-A LV-HE 3650 Lm 4000K CRI82 37° No dim	13N603XXCE02	13N603XXGE02	18.1	Incl. PSU	700	37,5
Linea DS-A LV-HE 3650 Lm 4000K CRI82 37° 1-10V & Push	13N603XXNE02	13N603XXUE02	18.1	Incl. PSU	700	37,5
Linea DS-A LV-HE 3650 Lm 4000K CRI82 37° Dali	13N603XXPE02	13N603XXVE02	18.1	Incl. PSU	700	37,5
Linea DS-A LV-HE 3650 Lm 4000K CRI82 60° No dim	13N603XXCF02	13N603XXGF02	21.1	Incl. PSU	700	37,5
Linea DS-A LV-HE 3650 Lm 4000K CRI82 60° 1-10V & Push	13N603XXNF02	13N603XXUF02	21.1	Incl. PSU	700	37,5
Linea DS-A LV-HE 3650 Lm 4000K CRI82 60° Dali	13N603XXPF02	13N603XXVF02	21.1	Incl. PSU	700	37,5

ITEM SPECIFICATIONS (PART B)

Description	W	Lm	Lm/W	CRI (typ.)	Pf	Ripple	Inrush current	B-16A Fuse	Safety class	Energy class
Linea DS-A LV-HE 3575 Lm 3000K CRI82 No dim	27,9	3575	128	82	0.98	<5%	7A 13µs	50 pcs	II	E
Linea DS-A LV-HE 3575 Lm 3000K CRI82 1-10V & Push	27,9	3575	128	82	0.95	<3%	5A 50µs	50 pcs	II	E
Linea DS-A LV-HE 3575 Lm 3000K CRI82 Dali	27,9	3575	128	82	0.95	<3%	5A 50µs	50 pcs	II	E
Linea DS-A LV-HE 3650 Lm 4000K CRI82 No dim	27,9	3650	131	82	0.98	<5%	7A 13µs	50 pcs	II	D
Linea DS-A LV-HE 3650 Lm 4000K CRI82 1-10V & Push	27,9	3650	131	82	0.95	<3%	5A 50µs	50 pcs	II	D
Linea DS-A LV-HE 3650 Lm 4000K CRI82 Dali	27,9	3650	131	82	0.95	<3%	5A 50µs	50 pcs	II	D

ITEM SPECIFICATIONS (PART C)

Description	Weight	Dimensions single carton	Quantity per carton	Expected Lifetime			Reported Lifetime*		
				L70B10	L80B10	L90B10	L70B10	L80B10	L90B10
Linea DS-A LV-HE CRI82	2094 gr	210x210x140 mm	6 pcs	653.000 hrs	529.000 hrs	465.000 hrs	>105.000 hrs	>105.000 hrs	>105.000 hrs

All values are measured at 230V (+/- 7%). * Based on 19.000hrs of LM80 testing at 1200mA and a Tc85°C.

LINEA DS-A 195 LV-HE

CRI82 5550/5800LM

ITEM SPECIFICATIONS (PART A)

Description	Item code		UGR	Type	mA	Vf
	CS	GS				
Linea DS-A LV-HE 5550 Lm 3000K CRI82 18° No dim	13N603XXCR02	13N603XXGR02	20.1	Incl. PSU	1200	37,5
Linea DS-A LV-HE 5550 Lm 3000K CRI82 18° 1-10V & Push	13N603XXNK02	13N603XXUK02	20.1	Incl. PSU	1200	37,5
Linea DS-A LV-HE 5550 Lm 3000K CRI82 18° Dali	13N603XXPK02	13N603XXVK02	20.1	Incl. PSU	1200	37,5
Linea DS-A LV-HE 5550 Lm 3000K CRI82 37° No dim	13N603XXCS02	13N603XXGS02	19.6	Incl. PSU	1200	37,5
Linea DS-A LV-HE 5550 Lm 3000K CRI82 37° 1-10V & Push	13N603XXNL02	13N603XXUL02	19.6	Incl. PSU	1200	37,5
Linea DS-A LV-HE 5550 Lm 3000K CRI82 37° Dali	13N603XXPL02	13N603XXVL02	19.6	Incl. PSU	1200	37,5
Linea DS-A LV-HE 5550 Lm 3000K CRI82 60° No dim	13N603XXCT02	13N603XXGT02	22.6	Incl. PSU	1200	37,5
Linea DS-A LV-HE 5550 Lm 3000K CRI82 60° 1-10V & Push	13N603XXNM02	13N603XXUM02	22.6	Incl. PSU	1200	37,5
Linea DS-A LV-HE 5550 Lm 3000K CRI82 60° Dali	13N603XXPM02	13N603XXVM02	22.6	Incl. PSU	1200	37,5
Linea DS-A LV-HE 5800 Lm 4000K CRI82 18° No dim	13N603XXCU02	13N603XXGU02	20.2	Incl. PSU	1200	37,5
Linea DS-A LV-HE 5800 Lm 4000K CRI82 18° 1-10V & Push	13N603XXNN02	13N603XXUN02	20.2	Incl. PSU	1200	37,5
Linea DS-A LV-HE 5800 Lm 4000K CRI82 18° Dali	13N603XXPN02	13N603XXVN02	20.2	Incl. PSU	1200	37,5
Linea DS-A LV-HE 5800 Lm 4000K CRI82 37° No dim	13N603XXCV02	13N603XXGV02	19.7	Incl. PSU	1200	37,5
Linea DS-A LV-HE 5800 Lm 4000K CRI82 37° 1-10V & Push	13N603XXNP02	13N603XXUP02	19.7	Incl. PSU	1200	37,5
Linea DS-A LV-HE 5800 Lm 4000K CRI82 37° Dali	13N603XXPP02	13N603XXVP02	19.7	Incl. PSU	1200	37,5
Linea DS-A LV-HE 5800 Lm 4000K CRI82 60° No dim	13N603XXCW02	13N603XXGW02	22.8	Incl. PSU	1200	37,5
Linea DS-A LV-HE 5800 Lm 4000K CRI82 60° 1-10V & Push	13N603XXNQ02	13N603XXUQ02	22.8	Incl. PSU	1200	37,5
Linea DS-A LV-HE 5800 Lm 4000K CRI82 60° Dali	13N603XXPQ02	13N603XXVQ02	22.8	Incl. PSU	1200	37,5

ITEM SPECIFICATIONS (PART B)

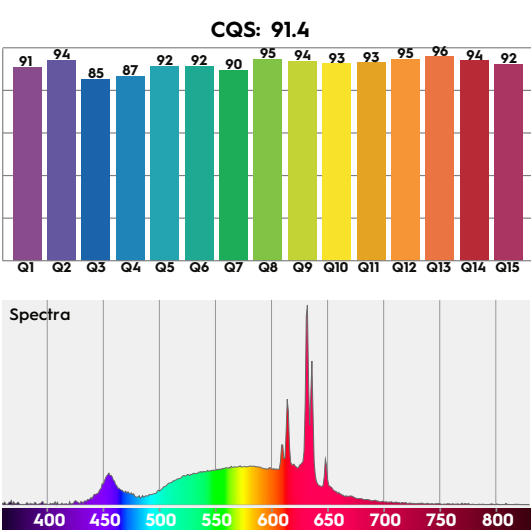
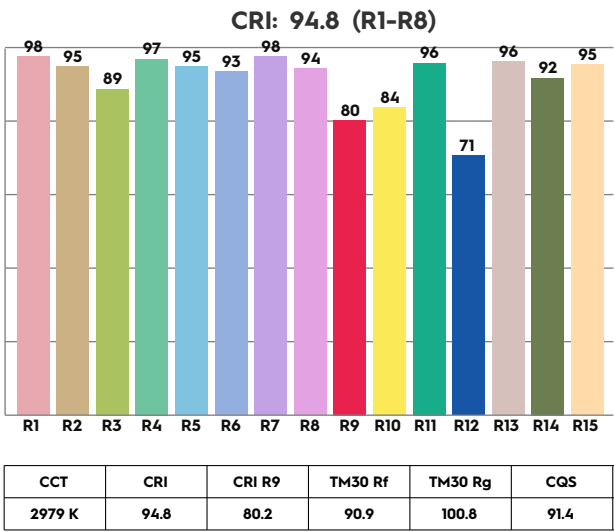
Description	W	Lm	Lm/W	CRI (typ.)	Pf	Ripple	Inrush current	B-16A Fuse	Safety class	Energy class
Linea DS-A LV-HE 5550 Lm 3000K CRI82 No dim	51,2	5550	108	82	0.95	<3%	5A 50µs	50 pcs	II	E
Linea DS-A LV-HE 5550 Lm 3000K CRI82 1-10V & Push	51,2	5550	108	82	0.95	<3%	100mA²s	22 pcs	II	E
Linea DS-A LV-HE 5550 Lm 3000K CRI82 Dali	51,2	5550	108	82	0.95	<3%	100mA²s	22 pcs	II	E
Linea DS-A LV-HE 5800 Lm 4000K CRI82 No dim	51,2	5800	113	82	0.95	<3%	5A 50µs	50 pcs	II	D
Linea DS-A LV-HE 5800 Lm 4000K CRI82 1-10V & Push	51,2	5800	113	82	0.95	<3%	100mA²s	22 pcs	II	D
Linea DS-A LV-HE 5800 Lm 4000K CRI82 Dali	51,2	5800	113	82	0.95	<3%	100mA²s	22 pcs	II	D

ITEM SPECIFICATIONS (PART C)

Description	Weight	Dimensions single carton	Quantity per carton	Expected Lifetime			Reported Lifetime*		
				L70B10	L80B10	L90B10	L70B10	L80B10	L90B10
Linea DS-A LV-HE CRI82	2094 gr	210x210x140 mm	6 pcs	653.000 hrs	529.000 hrs	465.000 hrs	>105.000 hrs	>105.000 hrs	>105.000 hrs

All values are measured at 230V (+/- 7%). * Based on 19.000hrs of LM80 testing at 1200mA and a Tc85°C.

3000K



4000K

